



The **View**[™] CCTV

Owners Manual & Set-up Instructions



Made in the USA

TABLE of CONTENTS

Important Information	3
Introduction	4
Unpacking	4
Set-up	5-12
Close Down	13-15
Operating Controls Diagram	16
Description of Controls	16-17
Operating your View	18
Care and Maintenance	19
Warranty & Service Information	19

Important Information

Thank you for choosing the VIEWTM portable video magnification system. The VIEW is a quality portable in-line system with a movable camera, distance, close-up and mirror image viewing capability.

Should your VIEW require service, refer to the Warranty Information section in this manual.

Caution: Do not remove the cover on the monitor or camera. There are no user serviceable parts inside. Any changes or modifications not expressly approved or performed by Vision Technology, Inc. could void the user's warranty.

Record the Serial number and date purchased: Model vt 3315

Serial Number: _____

Date Purchased _____ / _____ / **2006**

Please return the registration card in the mail (no postage required) or call 1-800-560-7226 to register your View with the manufacturer and validate the warranty.

Introduction

Although your new system is very simple to use, it is very important that you read the instructions in this guide very carefully. This step by step manual is arranged in the way we anticipate you will operate your new system.

Should you require assistance with set-up or a service issue please contact our client care department Monday—Friday 8:30am - 4:30 pm CST at **1-800-560-7226**. Our service department is here to provide courteous and knowledgeable responses to your inquiries.

Unpacking

Carefully remove the unit from the carton.

Save all of the packing materials, including shipping carton(s). They will come in handy if you have to store or ship your system. After unpacking, use the following checklist to make sure you have each of the listed items:

Checklist

- ☐ VIEW Video Magnification System
- ☐ Power Supply (yellow plug)
- ☐ Packaging material
- ☐ Owner's Manual
- ☐ Product Registration Card

Optional Accessories purchased may include:

- ☐ Lithium Battery
- ☐ Charger for Battery (black plug)
- ☐ Soft Sided Carrying Case

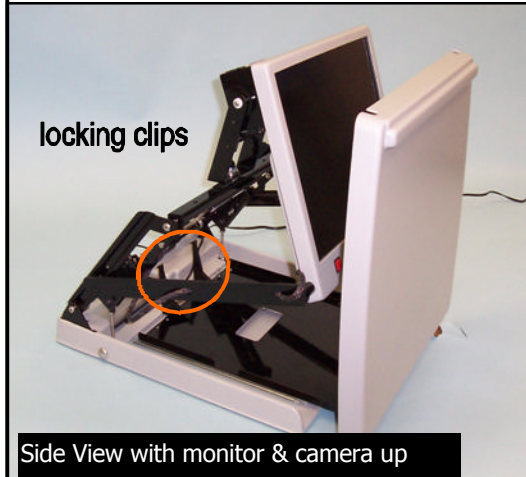
Set-up

Place the CCTV base on a sturdy work surface, such as a desk or table. Be sure there is enough room to work with your CCTV as you move the X-Y Table from side to side. A little extra space on either side of the system is also nice for placing additional reading materials or other items.

Follow the photos and descriptions for setting up (pages 6–12) and closing down (pages 13–15) your View CCTV.

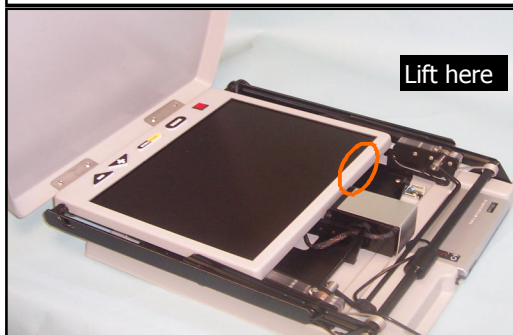
Opening the View™.

1. Set the View on a flat surface.
2. Grasp the back of the table top with the paper stop raised edge and pull up and out. The table top is held in place with 2 locking clips shown below.
3. Lift up the tray.

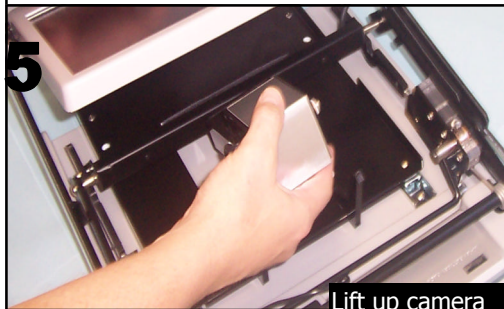




Raise the table top to its fullest upright position as shown below. 4. Grasp the top of the monitor and lift up as shown below.



5. Reach in with one hand and pull the camera up 2-3 inches to release the components.
6. Raise the monitor & camera will rise.



Lift up camera



Raising the monitor also raises the camera

7. Support the monitor up with one hand and **turn** the camera 180 degrees clockwise so the U-bar is angled away from the monitor. 8. Push up on the camera moving it towards the monitor with a gentle motion until the camera **clicks** into place.



Turn 180 degrees



click into place

Lift up camera U-bar to lock in place

9. Slide the tabletop out away from the base until there is room to fold it down. 10. Click into place by pressing down onto the clips.



Adjust monitor to desired height

11



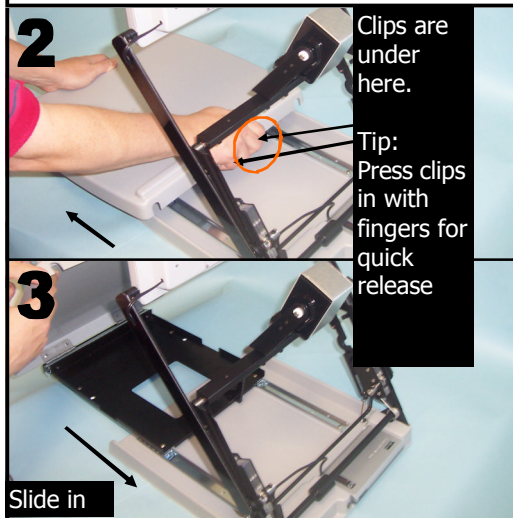
Turn camera 180 degrees back to x-y table viewing position, flip up for distance views

12

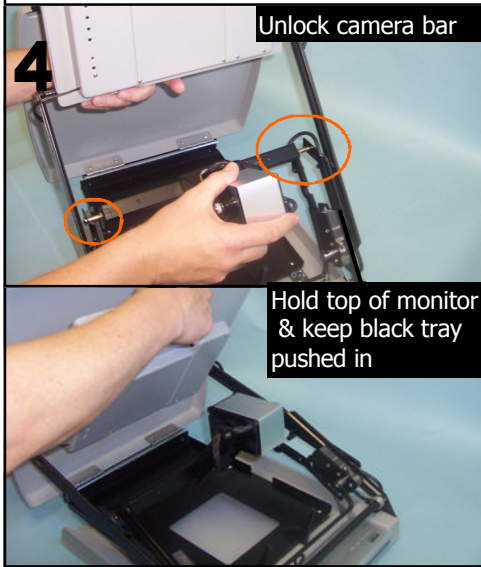


Closing the View™.

1 Turn off power and unplug. Lift and support the monitor in its highest position. **2.** Slide the tabletop out away from the base. Unclip the top by pulling out on the back of the table. **3.** Lift table top and slide the black portion back into the base.



4. With the camera in the x-y viewing position support the monitor and pull back on the u-bar & camera to release it from the locked position. Slowly let it collapse into position. The camera will lower first.



5. Make sure the wires are tucked in between the two table clips. Fold down the monitor and table top. 6. Press firmly on the back of the table top to lock the table into position. Place in carry case for safety.



Press down onto clips to lock in place



Operating Controls/Features

On\Off: The Red ON\OFF switch is located on the left portion of the front control panel. To turn on monitor, press the on\off button on the front of the monitor.

MODE **Select Mode:** (Button to the right of the power button)

1. Full Color– is excellent for viewing photos
2. Black on White– makes any print high contrast black and any background high contrast white.
3. White on Black– reverses the back- ground (white print/ black background)

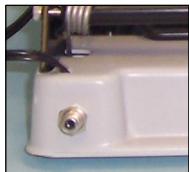
Brightness Control:(Center)
Press the left side of button to make lighter. Press the right side of button to make darker.

+ **Zoom Larger:** (2nd button from the Right) to increase magnification.

- **Zoom Smaller:** (Right Button) to decrease magnification

Operating Controls/Features

NTSC "Video Out" Port



(located on the left rear side of the base)
Connect a standard "NTSC" RCA cable to this port & video receiver (ie: LCD projector or TV screen)

Quiet Mode

An audible tone is sounded when you press a control button. To Change to Quiet Mode: with the system turned off, hold down the Mode button while turning the base unit on. Release after you hear two beeps. To turn the tone on again, repeat these same steps.

Auto-Focus

The VIEW is shipped in "continuous" Auto-Focus mode. This means that the camera brings the image into focus instantly. To turn Auto-Focus off: press and hold the Brightness control while powering system on. Follow the same steps to turn Auto-Focus on again.

Operating your View

The monitor on "The VIEW™" raises and lowers from table height up to 14 1/2" when locked into place.

Distant Viewing

The camera on "The VIEW™" is movable. To change camera view, grasp camera and rotate it to view desired object.

Mirror Image Viewing

Press the Contrast button to make image a true mirror image.

X-Y Table

Place your reading material or other objects on the X-Y table & move the table from side to side or front to back to view the magnified form on the display.

Helpful Tips

-Many users prefer reading in the white on black mode (third mode) because there is less glare.

-A black felt tip pen is the easiest to see and using the black on white mode (second mode) will give you the best image. Using ruled paper with dark lines can also be very helpful.

Care & Maintenance

The unit and display can be gently wiped with a clean soft cotton cloth to remove dust or dirt. Do not use any abrasive cleaners or spray it with cleaning solution.

Do not store the VTI Video Magnifier at temperatures below 14 degrees F or above 122 degrees F.

Make sure lid is snapped in place before lifting machine by the handle. You may also want to purchase a protective carrying case (part# VSC available from your Distributor).

Warranty & Service

2 year limited warranty from date of purchase.

If you are having problems with your VTI Video Magnifier, please call **1-800-560-7226** and ask for Technical Support. Do not attempt to open the machine parts. Doing so will void the warranty. When returning for service **ship insured** for purchased price to:
Attn RA# (CALL 1-800-560-7226 TO OBTAIN)
Vision Technology, Inc.
8501 Delport Drive
St. Louis, Mo 63114



Vision Technology, Inc.

1-800-560-7226

www.visiontechnology.com

Vision Technology Inc.

Client Care

Technical Support

is available at

1-800-560-7226

M-F 8:00 - 4:30 (CST)